

Name: _____

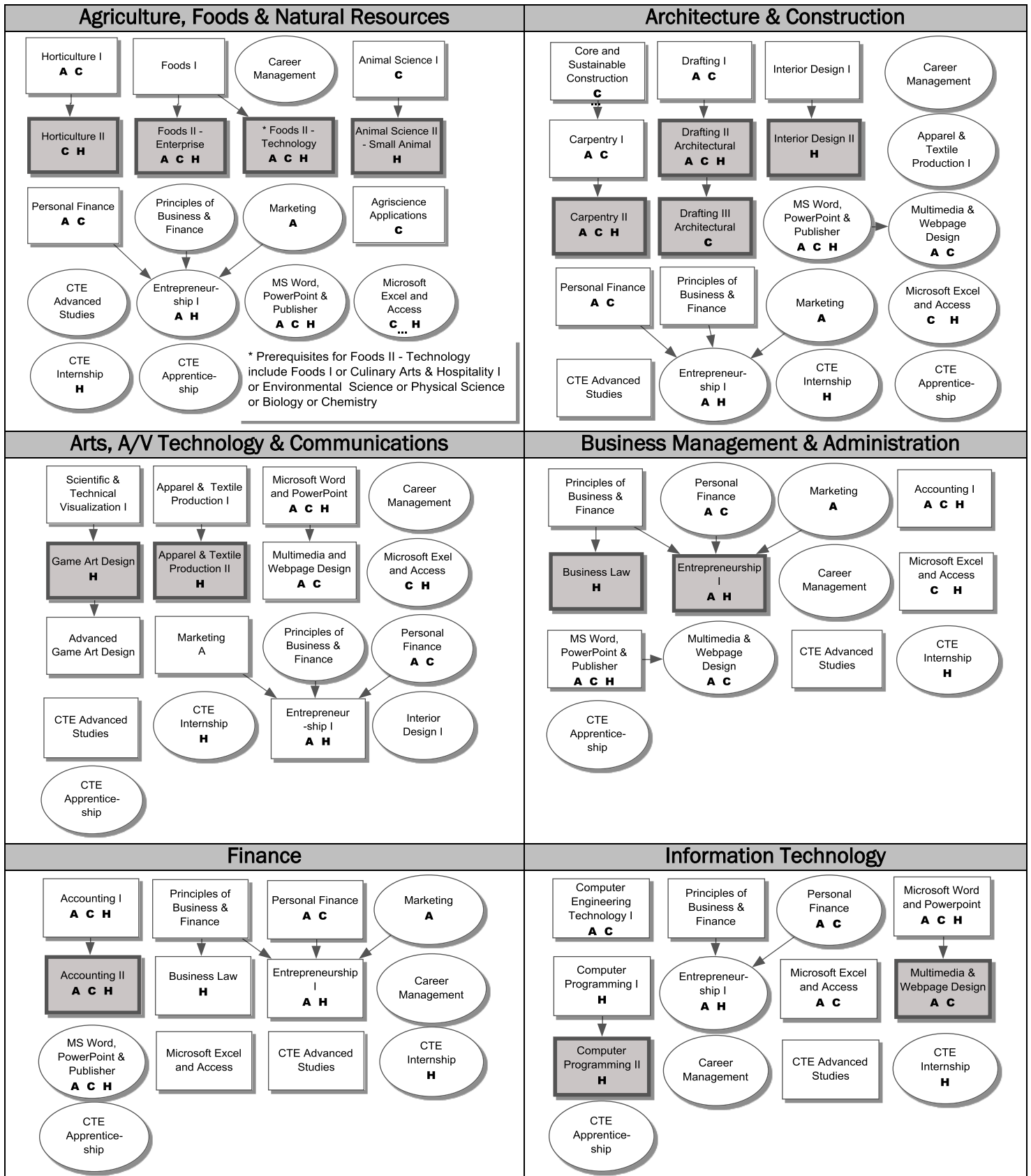
Grade: _____

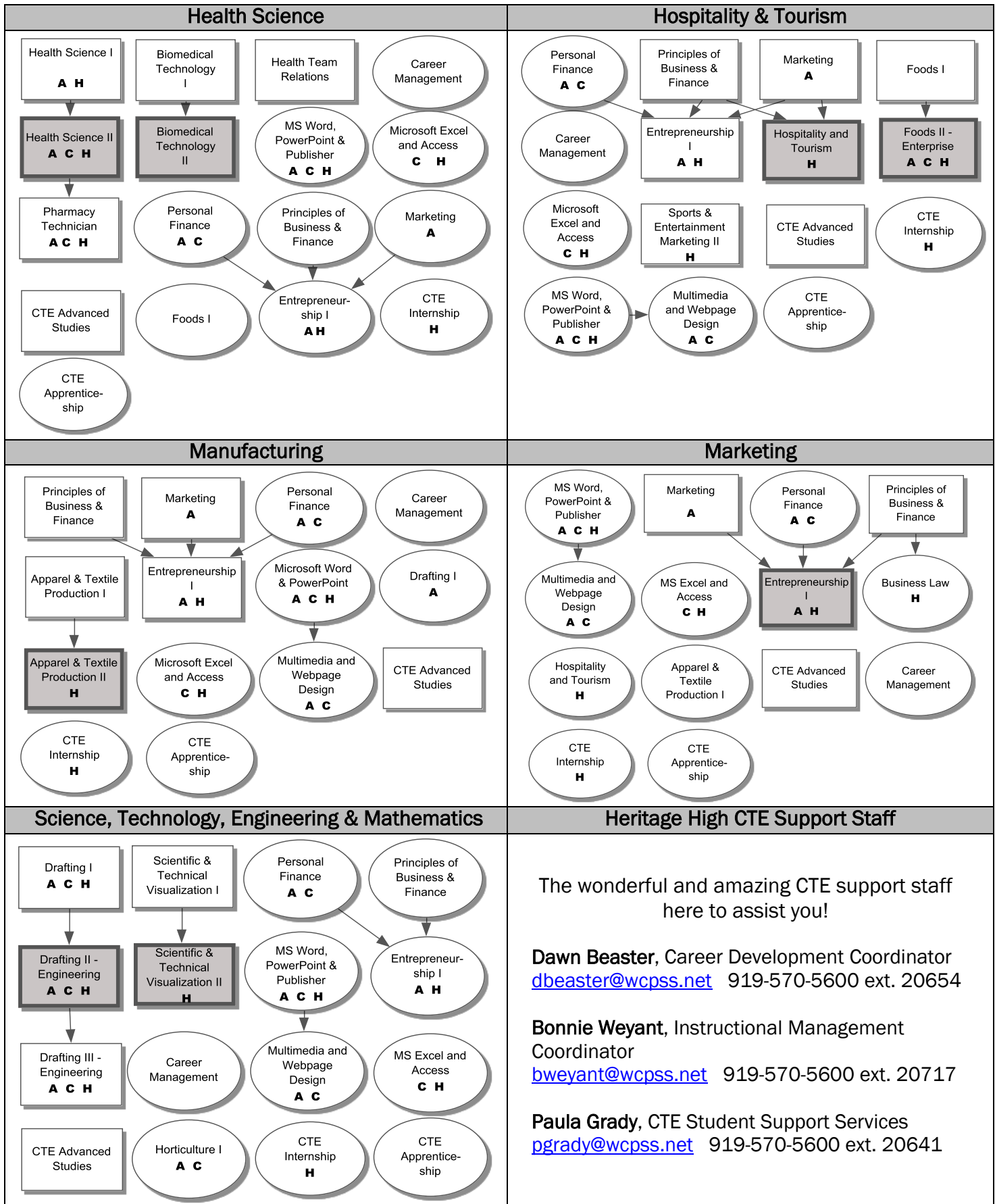
Heritage High Career & Technical Education Clusters 2016-2017

To graduate with a **CTE Concentration**, a student must take four credits within a cluster area.

Three foundation courses (square) with one being a **completer course (highlighted)**. The fourth credit can be either a foundation course (square) or enhancement course (circle). Arrow indicates prerequisites.

A = Is an articulated course **H** = Honors level available **C** = Associated credentialing opportunity





Career Interest: _____